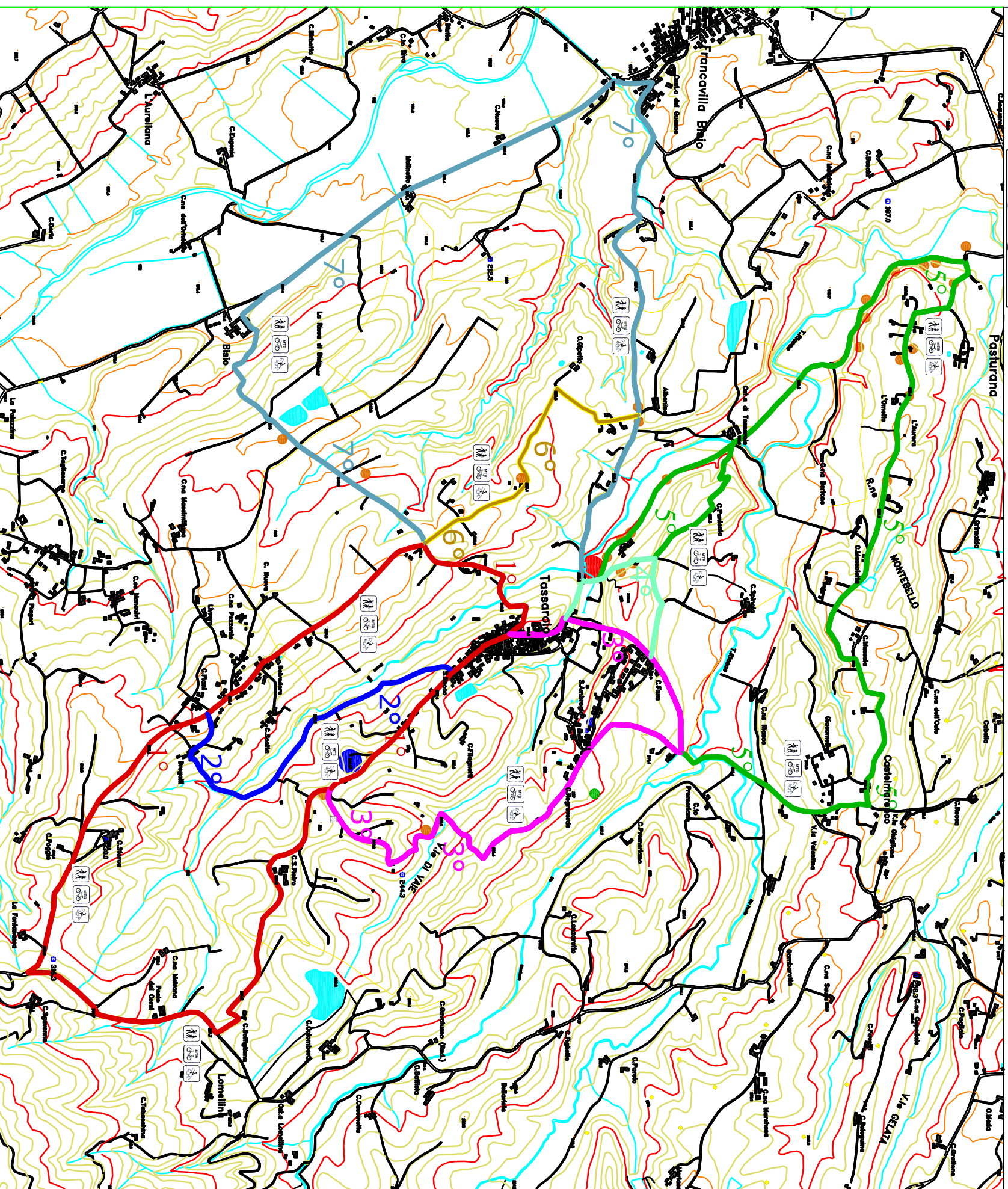
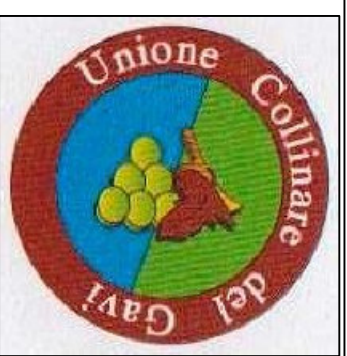


COMUNE DI TASSAROLO

ITINERARI VERDI



1° ITINERARIO: TASSAROLO - C.s Pietro - C.sa Bottiglino - C. Poggio - TASSAROLO (7,2 Km).

2° ITINERARIO: TASSAROLO - S.Rocco - Bregali - ITINERARIO 1. (1,8 Km).


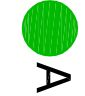


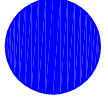
3° ITINERARIO: TASSAROLO - C. Fara - C. Rogoverde - V.le di Vaie - ITINERARIO 1. (3,5 Km).

4° ITINERARIO: TASSAROLO - C.Fara - Tassarolo. (2,5 Km).

5° ITINERARIO: ITINERARIO 4 - C.Pentema-Ost. di Tassarolo - Castelmarenco - V.la Valentina - ITINERARIO 3. (5,6 Km).

6° ITINERARIO: ITINERARIO 7 - C. Gipotto - ITINERARIO 7. (1,5 Km).

7° ITINERARIO: TASSAROLO - Francavilla Bisio - C.Nuova - Molinetto - C. Bisio - ITINERARIO 4. (6,1 Km).

 Voi Siete Qui
 Albero Monumentale
 Vous etez ici
 Alberi Centenari
 You are here

 Punto
Panoramico



Trekking



Mountain
Bike



Cavallo

1:7000